



# SonTek CastAway®-CTD and HydroSurveyor-M9 Now integrated with HYPACK® 2016!

A COMPLETE SOLUTION FOR VELOCITY, POSITION, AND DEPTH MEASUREMENT

**Who says you can't have the best of both worlds? Now, both the CastAway-CTD and SonTek HydroSurveyor-M9 systems are integrated with HYPACK® 2016 hydrographic surveying software. What does this mean for you?**

**Simple and Fast.** Water sound speed corrections are interpolated in both space and time with the fully integrated CastAway-CTD and HYPACK®, delivering agility and accuracy to your surveys. Bluetooth communication integrated - no cables required!

**Versatility.** Survey under and around bridges with two available position references - GPS and bottom track (speed over ground) with HydroSurveyor-M9.

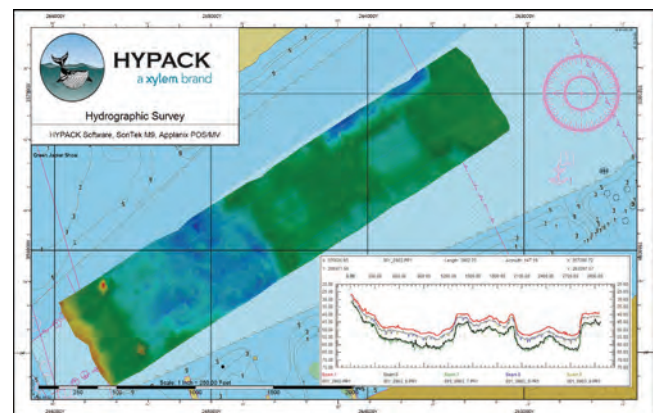
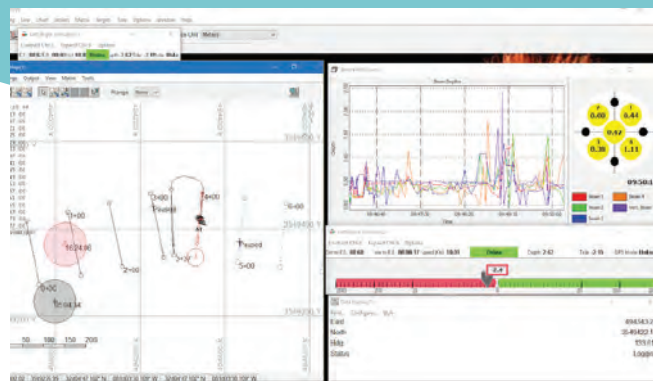
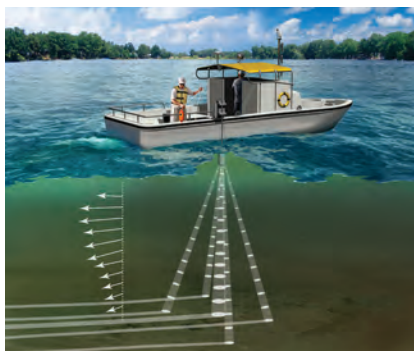
**Flexibility.** Complete, compact package for measuring bathymetry and correcting sound speed from a vessel of any size.

## Features Include:

- Sound speed integration and interpolation (with CastAway-CTD)
- Speed over ground (acoustic bottom tracking)
- 5-beam depth soundings (50° swath) with HydroSurveyor-M9 and HYPACK® Max
- Water column velocity mapping
- Automatic data gridding and interpolation
- 360° compass and two-axis tilt sensor
- Interface for customer-supplied GPS and/or heading sensor

## Additional options:

- HydroSurveyor powered by HYPACK® Max upgrade for existing RiverSurveyor-M9 systems
- SonTek RTK or DGPS
- Delrin/aluminum boat mount
- Bluetooth/2.4 GHz SonTek radio



hypack.com | sontek.com