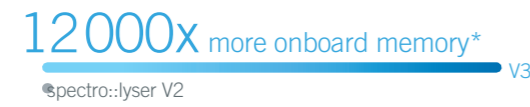
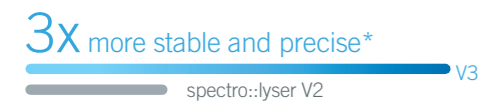


spectro::lyser V3

high performance online water quality monitoring - fingerprints and spectral alarms, - TSS, turbidity, NO3-N, COD, BOD, TOC, DOC, UV254, color, BTX, O3, HS

- Simplicity** Communicates directly with your smartphone via WLAN
- Ingenuity** Web server on board, IoT enabled
- Transparency** Transmits sensor status via optical information ring
- Precision** Provides a new level of optical performance in all applications
- Integrity** With 10000 sensors in the field, we know how to make affordable spectrometers last forever



* ... remaining the undisputed leader in all disciplines

Use it stand-alone or with the high-end terminal con::cube V3

The spectro::lyser V3 is very versatile. You can simply connect it via WLAN with your mobile device. Configure the spectro::lyser V3 via the user-friendly webinterface lo::Tool and visualize data there. For even more possibilities on connecting/interfaces other sensors, SCADA or

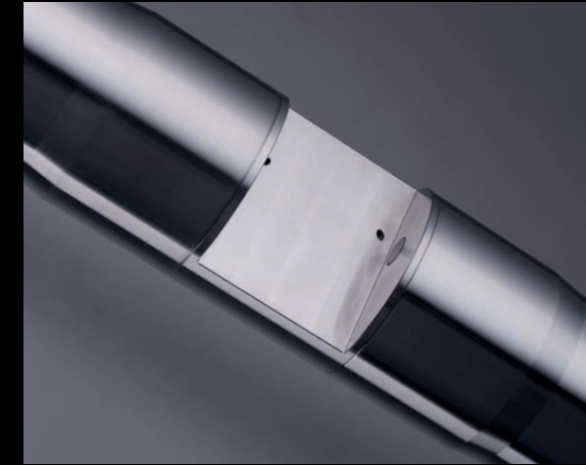
any central database the terminal con::cube V3 is the perfect solutions. It is a compact, powerful and versatile terminal for data acquisition and station control. Due to its low power consumption, this terminal fits the requirements for operation in remote installation sites.



mobile device with lo::Tool



con::cube V3 terminal with moni::tool



HEADQUARTERS

s::can Messtechnik GmbH
Brigittagasse 22-24
1200 Vienna, AUSTRIA
T: +43 / 1 / 219 73 93
F: +43 / 1 / 219 73 93-12
sales@s-can.at, www.s-can.at

CHINA

Rm D /17F Building B
1118 Changshou Rd.
200042 Shanghai
T: (+86-21) 34 06 03 11
F: (+86-21) 34 06 03 11
lxiao@s-can.cn, www.s-can.cn
Status: Representative Office

FRANCE

s::can France SARL
370 route de Saint Canadet
13100 Aix en Provence
T: + 33 4 42 20 35 01
F: + 33 9 82 25 35 01
sales@s-can.fr, www.s-can.fr
Status: Affiliate

ITALY

s::can contact Italy
Alessandro Morra
T: +39 333 983 5634
amorra@s-can.at
Status: Regional Sales Manager

MEXICO

s::can Mexico Sistemas de
Medición S. de R.L. de C.V
sales@s-can.mx
www.s-can.mx
Status: Affiliate

PORTUGAL

s::can contact Portugal
Vincenzo Rocca
T: +351 91 569 4663
vrocca@s-can.at
Status: Regional Sales Manager

SPAIN

s::can Iberia Sistemas de
Medición S.L.U.
Ciutat de Granada 28 bis,
1a Planta, 08005 Barcelona
T: +34 930 218 447
sales@s-can.es, www.s-can.es
Status: Affiliate

USA

s::can Measuring Systems LLC
38C George Leven Drive
North Attleboro, MA 02760
T: +1 (888) 694-3230
F: +1 (888) 469-5402
sales@s-can.us, www.s-can.us
Status: Affiliate

light. speed ahead.

The new spectro::lyser V3



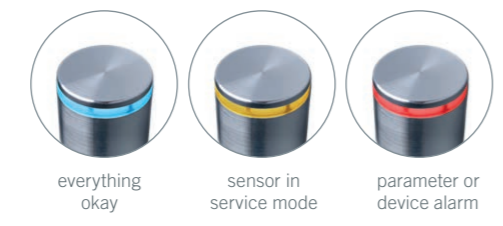
s::can
Intelligent. Optical. Online.

s::can
Intelligent. Optical. Online.



Optical information ring

The color of the optical information ring signals the state of the sensor.



Three different optical path lengths

The perfect measuring range and accuracy for every application.



Revolutionary precision

Improved optical efficiency and intelligent algorithms.

Fast measurement interval

Every 10 seconds, no delays, detects events immediately.

Huge 8 GB onboard memory

Allows logging data for longterm monitoring.

Extremely power efficient

Sleep mode with only 2 mW power consumption.

Wireless communication

Communicates directly with your mobile device via WLAN. No terminal required.

Web server on board - IoT enabled

No additional software is needed to configure the probe.

Wireless communication - Io::Tool

Intuitive web interface for data visualization and configuration of the spectro::lyser V3.



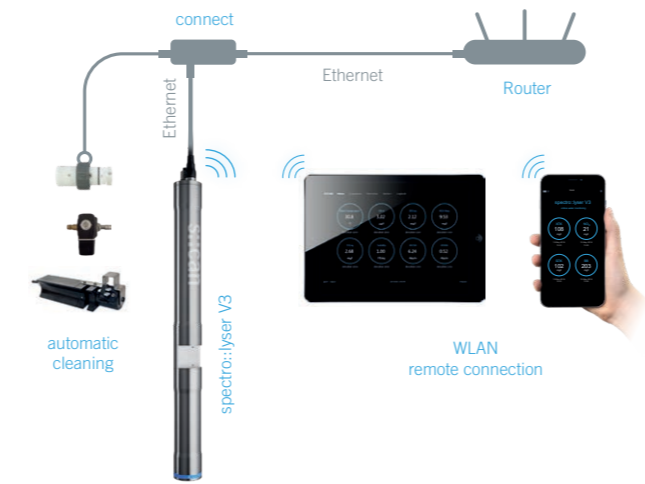
View all your data at a glance on your mobile device

Io::Tool visualizes measurement data, time series, fingerprints and status information.



Intelligent IoT enabled spectrometer probe with integrated webserver for smart water quality monitoring

Configure your spectro::lyser, install new parameters, perform calibrations.



spectro::lyser V3 in remote / stand-alone application

Thanks to the WLAN remote connection in combination with Ethernet the spectro::lyser can be used as stand-alone probe.

Choose your parameters

Freely configure your spectro::lyser for your application. You only pay for the parameters you want to measure. Add new parameters any time.

	Drinking Water		Environmental		Municipal Waste Water			Industrial			
	D	G	R	O	E	A	I	M	P	Q	B
TSS											
TS											
Turbidity											
Color app / true											
TOC											
DOC											
BOD											
COD / CODf											
NO3-N / NO3											
Chloramine											
HS-											
O3											
CLD											
Chi-a											
BTX											
UV254 t / UV254 f											
UV436 t / UV436 f											
Single wavelength											
Temperature											
Fingerprint											
Fingerprint comp											

Configure your spectro::lyser, install new parameters and perform calibrations.

