

CBS Isothermal -190°C Dry Storage Freezers

CBS Straw Storage Inventory System

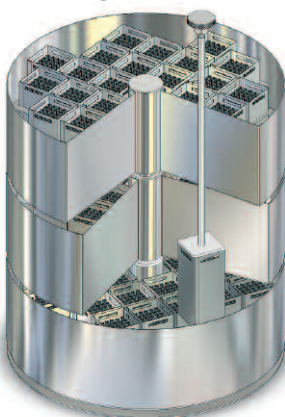
Designed for the CBS V-1500 Isothermal Freezer, this patent-pending Inventory System provides an efficient solution for storing and working with straws, free from liquid nitrogen contact.

- Ideal for IVF and other straw storage applications^{*)}
- Isothermal dry storage with uniform temperatures throughout the freezer from -195° to -190°C.
- 3-level rotating carousel provides convenient inventory control and maximises storage space. The system can hold up to 24,480* straws in 68 canisters.
- The middle and lower levels are ideal for medium and long-term storage respectively, whilst the upper level can be used for storage and as a workspace for viewing and manipulating samples safely at -190°C.
- Easy retrieval of samples using the patent-pending retrieval tool.

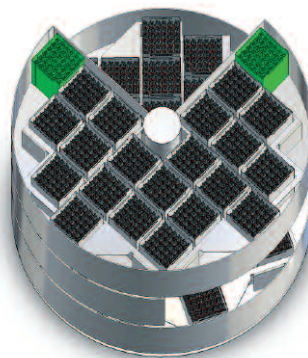
* Maximum capacity is subject to straw diameter. Straws and goblets are not supplied.



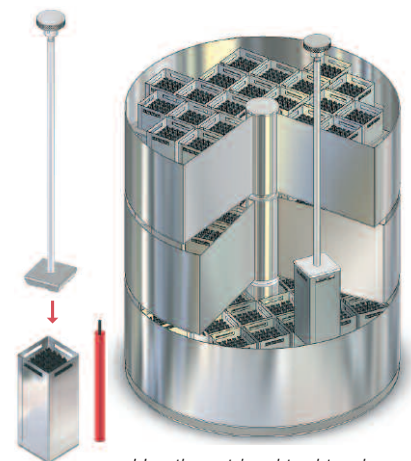
How the System works.



Rotating carousels provide access to lower storage levels and maximise storage space.



The upper level provides a convenient workspace where canisters can be parked (shown in green) and samples inspected at -190°C.



Use the retrieval tool to place and retrieve canisters quickly and easily.

CBS Isothermal Freezers are manufactured by Custom BioGenic Systems.

**Custom
BioGenic
Systems**