

BMP71 Label Printer

One smart printer to print it all



The BMP71 Label Printer is the premium mobile printer. Able to print the widest range of materials, including custom labels, BMP71 features a large and sharp screen, is easily portable and has a built-in keyboard, available in various configurations. Whether you need heat-shrink sleeves, die-cut labels or indoor/outdoor vinyl, you can be confident that the BMP71 printer has the right label material for your application.

Helps you deal with every situation

- Over 500 built-in symbols
- Over 400 parts + customs
- Over 30 different types of label material
- Label width up to 50 mm

Keeps you going on and on

- AA batteries or rechargeable NiMH battery
- Ideal for 1000 continuous or die-cut labels a day
- 2 year warranty

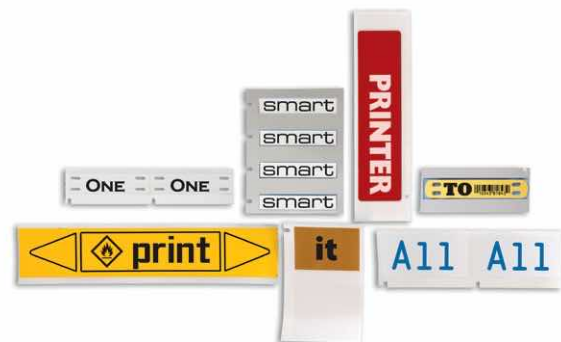
Shows the whole label at once


- Enlarged full colour screen

Speeds up your labelling

- Swift typing with both hands
- Full Qwerty/Azerty/Qwertz/Cyrillic keyboards
- Fast printing : 38 mm/sec

The BMP71 is your essential tool that handles all your label printing needs.



 **Watch our tutorial videos and see how easy labelling can be:**
www.bradyeurope.com/BMP71



Printers

| Order Reference | Art. No. | Description |
|-------------------|----------|---|
| BMP71-AZERTY-EU | 710601 | BMP71 Label Printer - AZERTY |
| BMP71-AZ-EU-LABS | 306861 | BMP71 Label Printer - AZERTY with Brady Workstation LAB Suite |
| BMP71-AZ-EU-PWID | 198643 | BMP71 Label Printer - AZERTY with Brady Workstation PWID Suite |
| BMP71-AZ-EU-SFIDS | 198679 | BMP71 Label Printer - AZERTY with Brady Workstation SFID suite |
| BMP71-CYRILLIC-EU | 710604 | BMP71 Label Printer - CYRILLIC |
| BMP71-CYR-LABS | 306865 | BMP71 Label Printer - CYRILLIC with Brady Workstation LAB Suite |
| BMP71-CYR-PWID | 198644 | BMP71 Label Printer - CYRILLIC with Brady Workstation PWID Suite |
| BMP71-CYR-SFIDS | 198680 | BMP71 Label Printer - CYRILLIC with Brady Workstation SFID suite |
| BMP71-QWERTY-EU | 710599 | BMP71 Label Printer - QWERTY EU |
| BMP71-QY-EU-LABS | 306862 | BMP71 Label Printer - QWERTY EU with Brady Workstation LAB Suite |
| BMP71-QY-EU-PWID | 198645 | BMP71 Label Printer - QWERTY EU with Brady Workstation PWID Suite |
| BMP71-QY-EU-SFIDS | 198681 | BMP71 Label Printer - QWERTY EU with Brady Workstation SFID suite |
| BMP71-QWERTY-UK | 710600 | BMP71 Label Printer - QWERTY UK |
| BMP71-QY-UK-LABS | 306864 | BMP71 Label Printer - QWERTY UK with Brady Workstation LAB Suite |
| BMP71-QY-UK-PWID | 198646 | BMP71 Label Printer - QWERTY UK with Brady Workstation PWID Suite |
| BMP71-QY-UK-SFIDS | 198682 | BMP71 Label Printer - QWERTY UK with Brady Workstation SFID suite |
| BMP71-US | 115157 | BMP71 Label Printer - QWERTY US |
| BMP71-QWERTZ-EU | 710603 | BMP71 Label Printer - QWERTZ |
| BMP71-QZ-EU-LABS | 306863 | BMP71 Label Printer - QWERTZ with Brady Workstation LAB Suite |
| BMP71-QZ-EU-PWID | 198647 | BMP71 Label Printer - QWERTZ with Brady Workstation PWID Suite |
| BMP71-QZ-EU-SFIDS | 198683 | BMP71 Label Printer - QWERTZ with Brady Workstation SFID suite |



The Basic Suite is included with every printer, all you need to do is download it. Workstation.BradyID.com/Free



Quickly identify your products and wires with customised text or graphical labels, using serialised or imported data. Workstation.BradyID.com/ProductandWire



Keep your facility safe and compliant by creating custom signs, label and pipemarkers, adding visual safety guidance. Workstation.BradyID.com/SafetyAndFacility



Ensure labels for all your lab samples and equipment are crisp, clear, readable and contain all necessary information. Easily design and create labels for your cryovials, centrifuge tubes, bottles, conicals, slides and other samples in your laboratory. Workstation.BradyID.com/LAB

Accessories



Soft carry case



Cleaning kit

| Art. No. | Description |
|----------|--|
| 710612 | AC Adaptor, Europe 220V |
| 710613 | AC Adaptor, UK 240V |
| 114886 | Cleaning Kit |
| 114881 | Hard sided Carry Case |
| 147998 | Media Adaptor for BMP71 Printer |
| 710614 | Quick Charger, Europe 220V |
| 710615 | Quick Charger, UK 240V |
| 114884 | Quick Charger, US 120V |
| 114885 | Rechargeable Nickel Metalhydride battery for the BMP71 printer |
| 114882 | Soft Carry Case |



Quick charger

Printer specifications

| Printer | |
|--------------------------|---|
| Description | The BMP71 is your essential tool that handles all your labelling needs. |
| Includes | This printer kit ships in a hard case with Rechargeable NiMH Battery, AC Adaptor, USB Communications Cable, TLS2200® / HandiMark™ Material Roll Adaptor, Quick Start Guide, Product CD (w/ Printer Driver, Tutorials, Full User's Guide), Cleaning Kit, a Brady Workstation Suite, M71C-2000-595-WT, M71-31-423 and M71-R6000 |
| Applications | Electrical labelling Facility identification Laboratory labelling Wire and cable labelling |
| Print Speed (mm/sec) | 38.00 mm/s |
| Internal Memory Capacity | 200 MB -up to 100,000 labels |
| Cutter | Manual cut Between labels or at end of print job |
| Keyboard Type | QWERTY, QWERTZ, AZERTY, CYRILLIC |
| Colour Capability | Monocolour |
| Language Support | Bulgarian, Czech, Danish, Dutch, English, Finnish, French, German, Hungarian, Italian, Norwegian (Bokmål), Polish, Portuguese, Romanian, Russian, Slovak, Slovenian, Spanish, Swedish |
| Portability | Yes |
| Weight (kg) | 2.49 |
| Size W x D x L (mm) | 107 x 106 x 328 |
| Operating Temperature | 5°C - 40°C |
| Operating Humidity | 10%-90% (non-condensing) |
| Storage Temperature | -30° - 60° C |
| Warranty | 2 years |

| Media supported | |
|------------------------------|--|
| Materials Supported | Over 400 Stock Parts, Continuous, Die Cut and Bulk Label Rolls |
| Continuous vs Die-cut Labels | Continuous Tape & Die Cut Labels |
| Custom Labels | Yes |
| Smart Cell | Yes |
| Max. Label Width (mm) | 50.80 |
| Min. Label Width (mm) | 6.40 |
| Max. Liner Width (mm) | 57.00 |
| Recommended Usage per Day | 1000 |

| Power supply | |
|--------------|------------------------------------|
| Battery Type | Rechargeable NiMH Battery |
| Power Supply | Rechargeable Battery AC Adaptor |

| Display | |
|--------------------|-------------------|
| Display | Colour LCD Screen |
| Display Resolution | 320 x 240 px |

| Fonts/graphics/symbologies | |
|----------------------------|---|
| Max. Lines of Text | 25 |
| Text Sizes (pt) | 4 - 170 pt |
| Built-in Fonts | Arial Alternative Monospaced Swiss 721 |
| Built-in Symbols | 500+ symbols included |
| Bar Code Capability | Yes |
| Bar Code Type | Code 39;128; more through software |

| Printing functions | |
|------------------------|---|
| Serialisation | Simple & Simultaneous & Single Advanced & Multiple Advanced |
| Print Resolution (dpi) | 300 |

| Software & connectivity | |
|-------------------------|-------------------|
| Connectivity Options | USB |
| Software Compatibility | Brady Workstation |